

Vismart

Smart Home Systems

VIDECOM-UK Electronics and Software Ltd.

Unit 2, Little Britain House

Alma Road, Chesham

Buckinghamshire

HP5 3HB, United Kingdom

Phone: +020 36379656 Fax: 020 36379657

www.vismart.co.uk

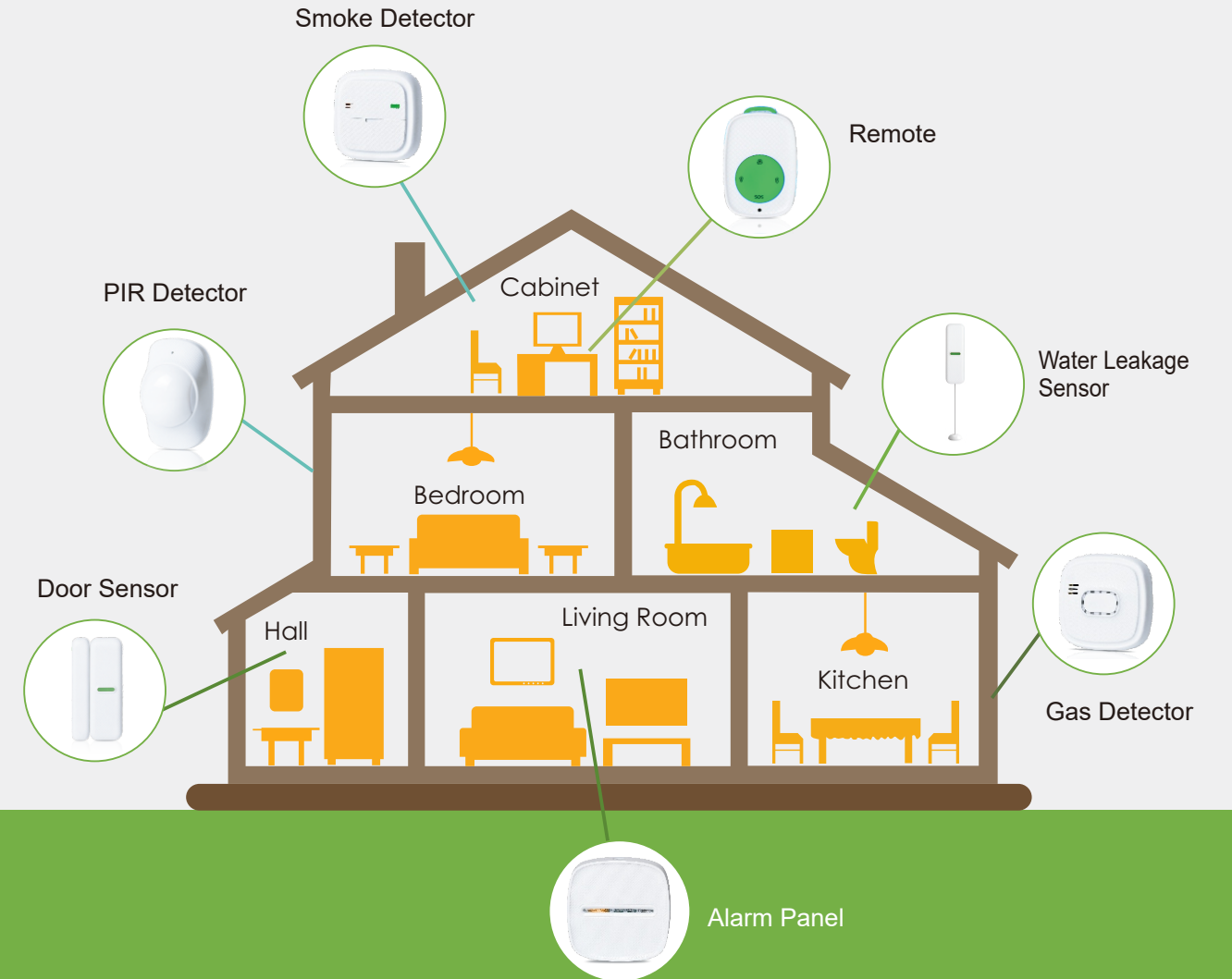


Vismart
Smart Home Systems



Zigbee Control

Alarm System

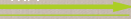




RF or Zigbee



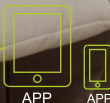
WIFI



WIFI



ZIGBEE OR Z-WAVE



APP



APP



Wi-Fi



Information notice



Power Supply



China Type

US Type

UK Type

German Type

**SMART BOX
VZG-GW17**

Smart Gateway
Ultra-stable wifi module
Remote App control
ZigBee protocol

Parameter

- Voltage: DC5V (with adaptor AC100-240V)
- Working current: <210mA
- Zigbee wireless standards: IEEE 802.15.4
- Transmit power: <20dBm
- Networking zigbee distance ≤150M (in the open area)
- Wifi: 2.4 GHz IEEE 802.11b/g/n
- System: Linux operating system
- Working humidity: Max 95%RH
- Working Temperature range: -10°C~50°C
- Size: 94x94x24mm

Smart Box / Gateway

GateWay is the brain of the ZigBee wireless smart home and alarm systems. This little box of marvels manages all the smart home appliances, speaks with all the smart home appliances, gets all the necessary information from them and keeps you updated all the time wherever you are in the world.

Needs only a power adaptor and a network cable connection to your router to start working full power.



PIR DETECTOR
VZG-PS17

Parameter

Voltage: DC3V (CR17450/3.0V battery)
Standby current: ≤ 10uA
Working current: 30mA
Transmit power: <20dBm
Networking zigbee distance: ≤150m (in the open area)
Zigbee wireless standards: IEEE 802.15.4
Detecting angle: 110°
Detection range: 12m
Working humidity: Max 95%RH
Working Temperature range: -10°C~50°C
Size: 112x71x48mm

Wireless PIR Motion Detector

Easy-to-install and long battery life wireless motion sensor detects any unwanted accompanies in your place and immediately warns you while triggering the alarm. Tamper function also triggers the alarm if sensor is removed or broken.

You don't need to worry about your little fellow pets for triggering the alarm, thanks to the built in pet tolerant technology they can run around in the house without causing any false alarms.

Its unique and sleek design will fit perfectly with your environment.

Tamper function only works if security system is armed.

DOOR / WINDOW SENSOR
VZG-DS17

Parameter

Voltage: DC3V(CR2450/3.0V battery)
Standby current: ≤ 5uA
Working current: 30mA
Transmit power: <20dBm
Networking zigbee distance: ≤150m (in the open area)
Zigbee wireless standards: IEEE 802.15.4
Working humidity: Max 95%RH
Working Temperature range: -10°C~50°C
Detecting distance: ≥20mm
Size: 111x31x13mm
Size: 111x17x12mm(magnetic)

Wireless Door/Window Sensor

Secure all your entrance points to your place with wireless door/window sensors which notifies you and triggers the alarm if any of the sensed door or window is opened.

Tamper function also triggers the alarm if sensor is removed or broken.

It is super easy to install and can be fitted almost all doors and windows without any tool needed.

Tamper function only works if security system is armed.



disarm



SOS
emergency



Four
buttons



Audible
alarm



Information
notice



Anti-false
alarm

REMOTE CONTROL VZG-RC17

Parameter

Voltage: DC3V (CR2032/3.0V battery)
Standby current: $\leq 5\mu\text{A}$
Working current: 30mA
Transmit power: $<20\text{dBm}$
Networking zigbee distance: $\leq 150\text{m}$ (in the open area)
Zigbee wireless standards: IEEE 802.15.4
Four buttons: Away, Stay, SOS, Scenario
Working humidity: Max 95%RH
Working Temperature range: $-10^{\circ}\text{C}\sim 50^{\circ}\text{C}$
Size: 56x38,5x12,5mm

Wireless Remote Control

Security system can be armed, dis-armed with only push of a button using this little remote control.

You can trigger the alarm with SOS button in any case of emergency and activate scenarios built in the mobile security application.

Long lasting battery life and small size removes the hassle of security system keypads and puts the full control in your pocket.

SMOKE DETECTOR VZG-SS17

Parameter

Voltage: DC3V(CR17450/3.0V battery)
Standby current: $<10\mu\text{A}$
Working current: 30mA
Alarm sound: $\geq 85\text{dB}(1\text{m})$
Networking zigbee distance: $\leq 150\text{m}$ (in the open area)
Zigbee wireless standards: IEEE 802.15.4
Working humidity: Max 95%RH
Working Temperature range: $-10^{\circ}\text{C}\sim 50^{\circ}\text{C}$
Size: 116x1116x42mm

Wireless Smoke Detector

Smoke detectors are crucial for the safety of you and your property. Though, traditional smoke detectors warn you only if you are at home. With our wireless smoke detector you don't have to worry about not being in your home. If anything bad happens, security system will immediately warn you via the mobile app while triggering the alarm.

Positioning of smoke detectors is crucial for safety. Please consult professional smoke alarm installation guide coming with your device.



Lighting information



the buzzer sounding



GAS DETECTOR VZG-GS17

Parameter

Voltage: AC100-240V
Standby current: ≤15mA
Working current: 40mA
Alarm sound: ≥85dB(1m)
Detection of gas: natural gas
Networking zigbee distance: ≤150m (in the open area)
Zigbee wireless standards: IEEE 802.15.4
Working humidity: Max 95%RH
Working Temperature range: -10°C~50°C
Size: 111x118x45mm

Gas Detector

Gas leakage in your place could be fatal, gas detectors can be life saving in these situations. With our gas detectors you can ensure this safety with extra awareness. In any gas leakage emergency situation, our detectors cut off the gas supply and warn you via the mobile app while triggering the alarm.

Positioning of gas detectors is crucial for safety. Please consult professional gas alarm installation guide coming with your device.



Lighting information



the buzzer sounding



WATER LEAKAGE SENSOR VZG-WS17

Parameter

Voltage: DC3V(CR2450/3.0V battery)
Standby current: ≤ 5uA
Working current: 30mA
Temperature range: -10°C~55°C
Networking zigbee distance: ≤150m (in the open area)
Wireless frequency: 2.4G
Working humidity: Max 95%RH
Size: 111x31x13mm

Wireless Water Leakage Sensor

With the wireless water leakage sensor you can protect your place against any water leakage and flooding. Water leakage sensors warn you via mobile app immediately after sensing any leakage and trigger the alarm.

It is super easy to install and can be fitted anywhere you want without any tool needed.



Wi-Fi



Information notice



SIREN & REPEATER VZG-SR17

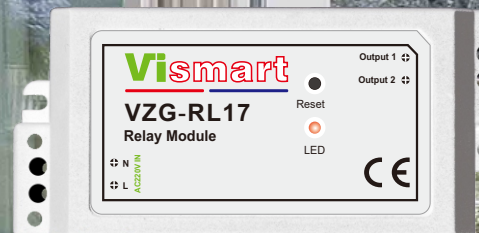
Parameter

Voltage: DC5V with adaptor AC100-240V
Working current: <210mA
Alarm sound: ≥85dB(1m)
Temperature range: -10°C~50°C
Networking zigbee distance: ≤150m (in the open area)
Wireless frequency: 2.4G
Working Humidity: 95%RH
Size: 118x118x45mm

Repeater and Siren

Stable communication between wireless devices is important, especially in security systems. Repeater amplifies wireless signals of the security system to ensure clear communication between peripherals.

Repeater doubles as a indoor siren, sounds when a alarm triggered by any security peripheral.



RELAY MODULE VZG-RL17

Parameter

Input: AC100-240V/50Hz,60Hz
Output: ≤500w
Temperature range: -10°C~50°C
Networking zigbee distance: ≤150m (in the open area)
Wireless frequency: 2.4G
Working Humidity: 95%RH
Size: 90x29x15mm

Wireless Relay Module

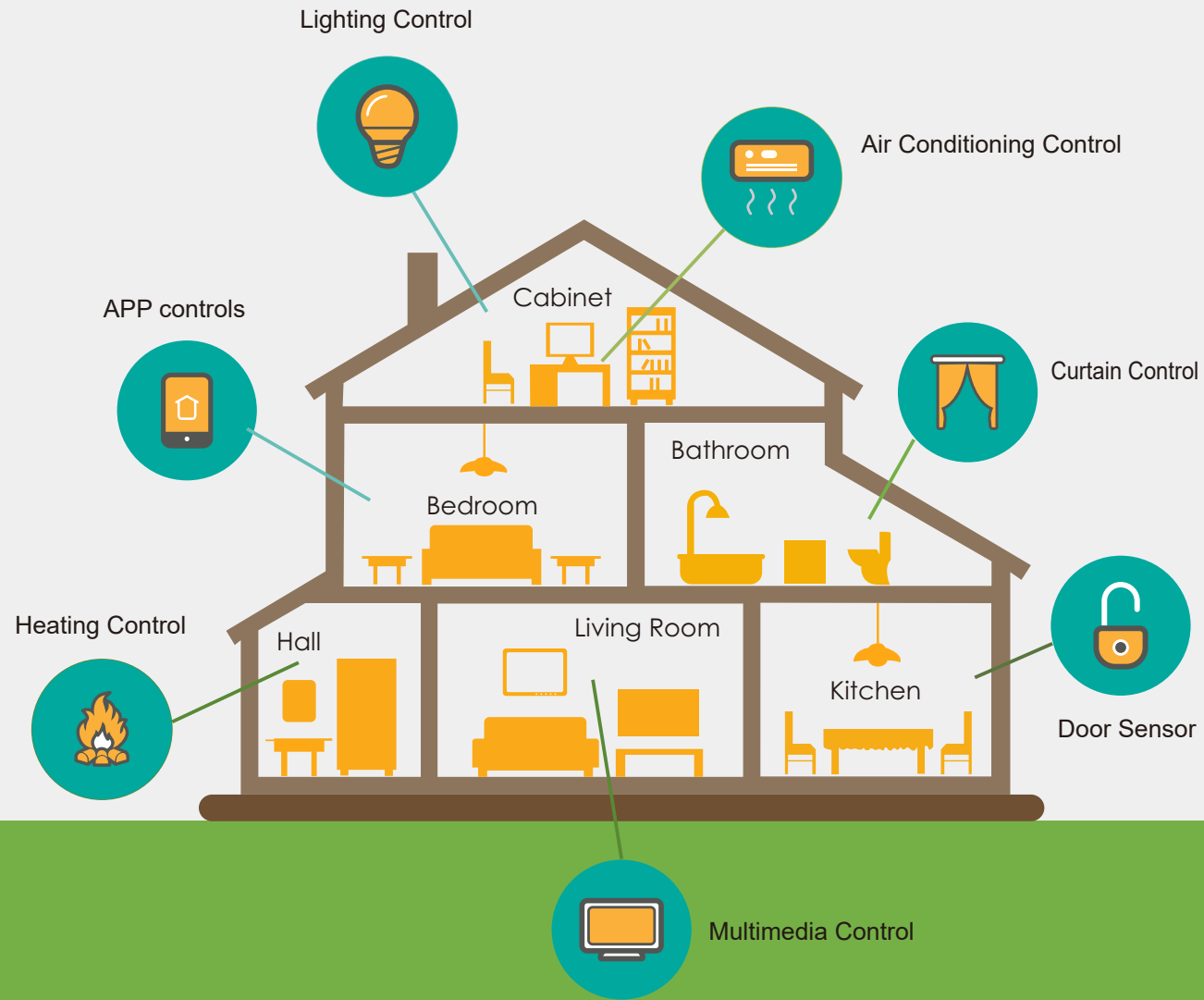
Relay Module provides you a relay output that can be used for anything for your needs. All control made via the mobile smart home app.

Wireless communication makes the installation and usage super easy.



Zigbee Control

Smart Home Systems





SWITCH 1 channel VZG-SW01A (Single wire switch)

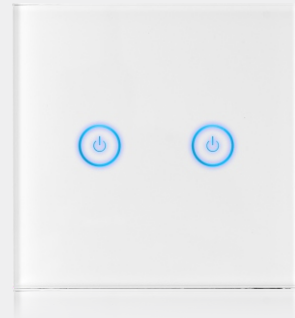
Parameter

Input: Single wire
Output: $\geq 15w$, $\leq 200w$
Temperature range: $-10^{\circ}C \sim 55^{\circ}C$
Networking zigbee distance: $\leq 150m$ (in the open area)
Wireless frequency: 2.4G
Working humidity: Max 95%RH
Size: 86x86x34mm

SWITCH 1 channel VZG-SW01B

Parameter

Voltage: AC110~250V / 50~60Hz
Operating Temperature: $-30 \sim 70$ Centigrade
Wireless type: WiFi - 2.4Ghz
Wi-Fi standard: IEEE802.11B/g
Self Consuming Power: Less than 0.1mW
Size: 86x86x34mm



SWITCH 2 channel VZG-SW02A 2X5A RELAY

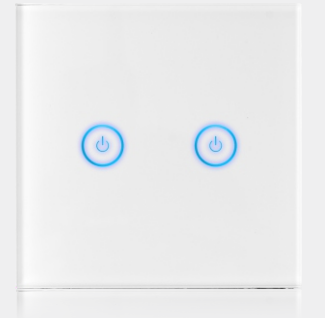
Parameter

Input: AC100-240V/50Hz,60Hz
Output: $\leq 500w$
Temperature range: $-10^{\circ}C \sim 55^{\circ}C$
Networking zigbee distance: $\leq 150m$ (in the open area)
Wireless frequency: 2.4G
Working humidity: Max 95%RH
Size: 86x86x34mm

SWITCH 2 channel VZG-SW02B

Parameter

Input: AC100-240V/50Hz,60Hz
Output: $\leq 1000w$
Temperature range: $-10^{\circ}C \sim 55^{\circ}C$
Networking zigbee distance: $\leq 150m$ (in the open area)
Wireless frequency: 2.4G
Working humidity: Max 95%RH
Size: 86x86x34mm





DIMMER **VZG-DM01A**

Parameter

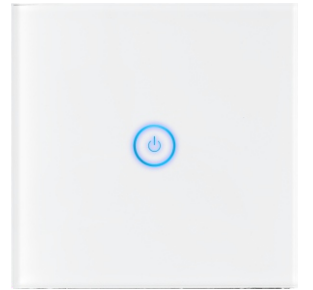
Input: AC100-240V/50Hz,60Hz
Output: ≤200w
Temperature range: -10°C~55°C
Networking zigbee distance: ≤150m (in the open area)
Wireless frequency: 2.4G
Working humidity: Max 95%RH
Size: 86x86x34mm



Dimmer Module

You want the living room lights dimmed, kitchen lights fully bright and hallway on %30 brightness? It is super easy and energy efficient to manage your dimmable lights with our capacitive touch button dimmer switch.

You can create scenarios and control multiple appliances at once to adapt your lifestyle with our user friendly smart home mobile app.



CURTAIN **VZG-CU01A**

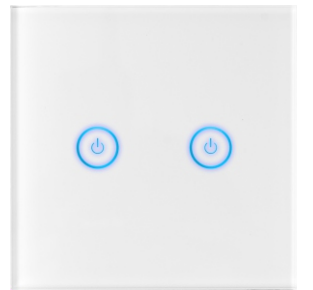
Parameter

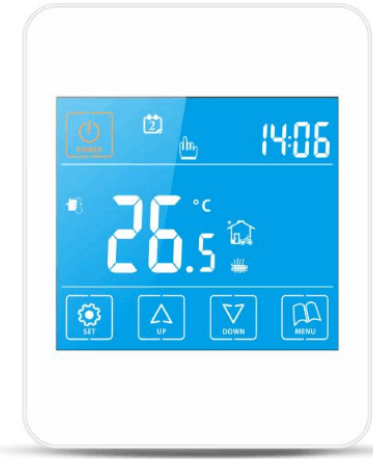
Input: AC1000-240V/50Hz,60Hz
Output :≤500w
Temperature range: -10°C~55°C
Networking zigbee distance: ≤150m (in the open area)
Wireless frequency: 2.4G
Working humidity: Max 95%RH
Size: 86x86x34mm

Curtain Module

Touch button Curtain Module can open and close your curtains, shutters, blinds, garage door and much more you can imagine.

Open your garage door and blinds just before you arrive home and open the living room window to let some fresh air in to welcome you. All the control in your hands with our smart home mobile app.





THERMOSTAT VZG-TH01A

Parameter

1. 7-day, 6-period time program
2. Touch screen LCD with blue backlight
3. De-frost protection ≤5°C
4. Key-lock function
5. Memory function (On/ off condition can not be memorized)
6. Advanced setting
7. Double sensors to control and limit the temp.
8. Water Protection: IP20
9. Flame retardant PC

SMART SOCKET VZG-SS01A

Parameter

- Input: AC100-240V/50Hz,60Hz
- Output : ≤1000w
- Temperature range: -10°C~55°C
- Networking zigbee distance: ≤150m (in the open area)
- Wireless frequency: 2.4G
- Working humidity: Max 95%RH
- UK Type Size: 110x62x70mm
- Europe Type Size: 110x62x72mm
- US Type Size: 110x62x66mm
- China Type Size: 110x62x62mm



Smart Socket

Smart Socket gives you the infinite possibilities of smart home control without any installation or equipment needed. Anything you plug in to sockets can be automated.

You can see the status of the Smart Socket from the mobile app and turn on/off from wherever you are in the world.

THERMOSTAT VALVE VZG-TV01A

Parameter

- Voltage : AC/DC 230 50/60Hz
- Consumption : 2W
- Effective Stroke : 3.0 mm
- Control Mode : Turn on/off
- Full Open Time : <6 minutes
- Full Close Time : <6 minutes
- Control Component : Paraffin
- Material of Return : 65Mn
- Working Temperature : -5°C ~ 50°C
- Protection : Class Ip54
- Wire : 2x0.5mm² Length of Exposed Wire : 1m
- Color : Saffron



China Type



US Type



UK Type



German Type



REMOTE CONTROL VZG-RC01A

Parameter

Voltage: (23A/12V battery)
Standby current: ≤5uA
Working current: ≤30mA
Transmit power: <20dBm
Support 18 buttons function
Networking zigbee distance: ≤150m (in the open area)
Zigbee wireless standards: IEEE 802.15.4
Working humidity: Max 95%RH
Working Temperature range: -10°C~50°C
Size:134x54x12mm

Multimedia Remote Control

Multimedia Remote Control adds another edge of comfort to controlling your smart home appliances. All the buttons can be programmed for your needs and scenarios can be created to control multiple appliances with only push of a button.



IR CONTROL VZG-IR01A

Parameter

Voltage: AC110~250V / 50~60Hz
Operating Temperature: -30~70 Centigrade
Wireless type: WiFi-2.4Ghz
Software system: IOS/Android
Turn fixtures on or off from anywhere with your tablet or smart phone
Wi-Fi standard: IEEE802.11B/g
Self Consuming Power: Less than 0.1mW
Size: 86x86x34mm

ZigBee System

