

Profession • Integrity • Innovation

***Secuart***  
security systems

**Videocom-UK Electronics and Software Ltd.**

Unit 2, Little Britain House, Alma Road  
Chesham, London, United Kingdom  
Tel: +44 (0) 20 363 796 56  
www.videocom-uk.co.uk

**Professional Electric Lock Products Manufacturer**

**Excellent quality Enjoy safe**



***Secuart***  
security systems

**GLOBAL SECURITY SOLUTION SUPPLIER**

*2016-2017*



Maydin Group Companies are specialized on Electronic Security - Communication and Automation Systems. All of our companies from the point of existence with a

huge experience pay a great attention on providing

HIGHLY QUALIFIED AND CUSTOMER SATISFIED

services on projects according to the physical conditions of residence and workplace projects and provide the best of the possible solutions to the costumers.

IN SECURITY QUALITY IS THE MOST IMPORTANT

in our companies. Maydin Group companies had following this line concerning human life safety, home or workplace security, reliability without leaving any doubt

in the security devices.

Our companies use mostly developed technologies in the world and provide

services with highly qualified technicians.

COMPLETE COSTUMER SATISFACTION

is our satisfaction.



# Product Catalog

- 1. Electromagnetic Lock Series**.....2
  - ※ 60KG(120Lbs) Magnetic Lock.....3
  - ※ 180KG(350Lbs) Magnetic Lock.....3
  - ※ 280KG(600Lbs) Magnetic Lock.....4
  - ※ 380KG(800Lbs) Magnetic Lock.....5
  - ※ 500KG(1200Lbs) Magnetic Lock.....6
  - ※ Waterproof Magnetic Lock.....7
  - ※ Door Hoder.....8
  - ※ Magnetic Lock Bracket .....9
- 2. Electric Bolt Lock Series**.....10
  - ※ Electric Bolt Lock.....11
  - ※ Electric Bolt Lock Bracket.....13
- 3. Electric Strike Series**.....14
- 4. Electric Rim Lock Series**.....18
- 5. Door Release Button Series**.....20
- 6. Single Door Access Control**.....23
- 7. Power Supply Series**.....26
- 8. Door Closer Series**.....27

## Magnetic Lock Series



**Professional Design & Super Suction**  
**Superior Quality and Reliable Performance**

### ※ Product Overview

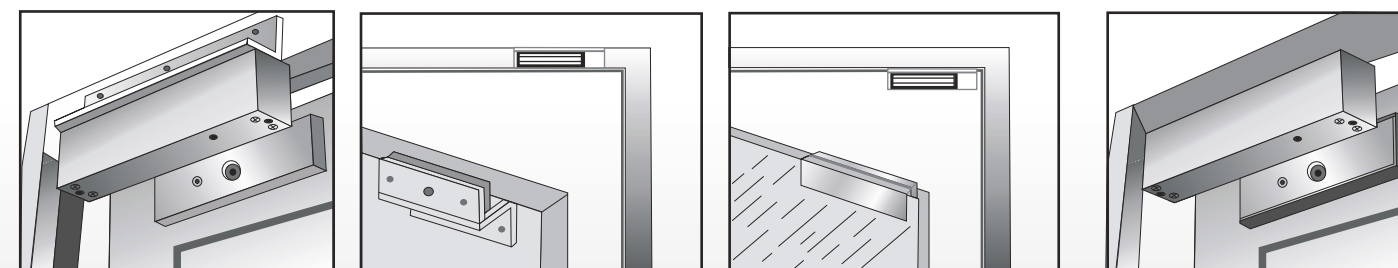
The design of magnetic locks(Electromagnetic lock) is the same as the electromagnet. By using the principle of electromagnetism, when current passes through the silicon steel sheet, magnetic locks will produce powerful suction, thereby help to tightly absorb iron plate. Even small current will produce huge magnetic force, which can effectively control the door.

Secuart magnetic locks adopt international leading production equipment and packaging technology, whlogy, which not only makes our locks' antioxidant capacity of the surface reach the international leading level, but also helps to increase the holding force (higher 20% than other manufacturers). Now our locks have been sold to more than 60 countries and regions around the world, they are widely used in the important places such as airports, subways, banks, prisons, intelligent buildings, intelligent community and so on, and become convenient, fast and intelligent tool for global users, gain good reputation from the customers.

### ※ Advantage of the products

- ◆ Powerful static linear holding force.
- ◆ Dual Voltage 12 or 24 VDC(optional).
- ◆ Built-in reverse current protection device (MOV).
- ◆ Anti residual magnetism design, anti-wear manufacturing materials.
- ◆ Shell is made of high-strength aluminum alloy, Anodized.
- ◆ Increase the holding Force, Dual Insulative Hosing.
- ◆ MA certified products of China / CE certification of EU.
- ◆ Complete electromagnetic suction working no mechanical failure.

### ※ Installation drawing



L bracket

ZL bracket

U bracket

Effect of Installation groove for Armature plate

## Magnetic Lock Series

### 60KG(120Lbs) Single Door Magnetic Lock



Model	SCL-60A
Lock Size	80L*37W*24H(mm)
Armature Plate Dimension	70L*33W*9H(mm)
Holding Force	60kg(120Lbs)
Door signal	No
Lock signal	No
Input Voltage	DC12V
Working Current	12V/120mA
Door Type Applicable	File Cabinet ,Display Cabinet
Security Type	Power off to open
Weight	0.6KG

### 180KG(350Lbs) Single Door Magnetic Lock With Mortise Mount



Model	SCL-180EA	SCL-180ES
Lock Size	190L*31.5W*22.2H(mm)	
Armature Plate Dimension	130L*33W*9H(mm)	
Holding Force	180kg(350Lbs)	
Door signal	No	No
Lock signal	No	Yes
Input Voltage	DC12V or DC24V	
Working Current	12V/300mA 24V/150mA	
Door Type Applicable	Wooden / Glass / Metal / Fireproof door	
Security Type	Power off to open	
Weight	1.2KG	1.2KG

### 180KG(350Lbs) Single Door Magnetic Lock



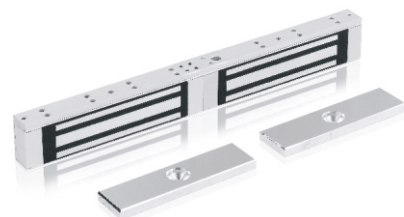
Model	SCL-180A	SCL-180AS
Lock Size	170L*42W*21H(mm)	
Armature Plate Dimension	130L*33W*9H(mm)	
Holding Force	180kg(350Lbs)	
Door signal	No	No
Lock signal	No	Yes
Input Voltage	DC12V or DC24V	
Working Current	12V/300mA 24V/150mA	
Door Type Applicable	Wooden / Glass / Metal / Fireproof door	
Security Type	Power off to open	
Weight	1.2KG	1.2KG

### 280KG(600Lbs) Single Door Magnetic Lock



Model	SCL-280A	SCL-280AS	SCL-280ADS
Lock Size	250L*47W*26H(mm)		
Armature Plate Dimension	180L*38W*11H(mm)		
Holding Force	280kg(600Lbs)		
Door signal	No	No	Yes
Lock signal	No	Yes	Yes
Input Voltage	DC12V or DC24V		
Working Current	12V/480mA 24V/240mA		
Door Type Applicable	Wooden / Glass / Metal / Fireproof door		
Security Type	Power off to open		
Weight	2KG	2KG	2KG

### 180KG(350Lbs) Double door Magnetic Lock



Model	SCL-180B	SCL-180BS
Lock Size	340L*42W*21H(mm)	
Armature Plate Dimension	130L*33W*9H(mm)	
Holding Force	180kg(350Lbs)*2	
Door signal	No	No
Lock signal	No	Yes
Input Voltage	DC12V or DC24V	
Working Current	12V/300mA*2 24V/150mA*2	
Door Type Applicable	Wooden / Glass / Metal / Fireproof door	
Security Type	Power off to open	
Weight	2.4KG	2.4KG

### 280KG(600Lbs) Double door Magnetic Lock



Model	SCL-280B	SCL-280BS	SCL-280BDS
Lock Size	500L*47W*26H(mm)		
Armature Plate Dimension	180L*38W*11H(mm)		
Holding Force	280kg(600Lbs)*2		
Door signal	No	No	Yes
Lock signal	No	Yes	Yes
Input Voltage	DC12V or DC24V		
Working Current	12V/480mA*2 24V/240mA*2		
Door Type Applicable	Wooden / Glass / Metal / Fireproof door		
Security Type	Power off to open		
Weight	4KG	4KG	4KG

## Magnetic Lock Series

### 280KG(600Lbs) Single Door Magnetic Lock With Mortise Mount



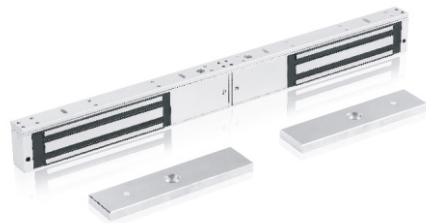
Model	SCL-280EA	SCL-280ES
Lock Size	229L*38W*27H(mm)	
Armature Plate Dimension	180L*38W*11H(mm)	
Holding Force	280kg(600Lbs)	
Door signal	No	No
Lock signal	No	Yes
Input Voltage	DC12V or DC24V	
Working Current	12V/480mA 24V/240mA	
Door Type Applicable	Wooden / Glass / Metal / Fireproof door	
Security Type	Power off to open	
Weight	2KG	2KG

### 380KG(800Lbs) Single Door Magnetic Lock



Model	SCL-380A	SCL-380AS	SCL-380ADS
Lock Size	285L*55W*29H(mm)		
Armature Plate Dimension	190L*45W*11H(mm)		
Holding Force	380kg(800Lbs)		
Door signal	No	No	Yes
Lock signal	No	Yes	Yes
Input Voltage	DC12V or DC24V		
Working Current	12V/500mA 24V/250mA		
Door Type Applicable	Wooden / Glass / Metal / Fireproof door		
Security Type	Power off to open		
Weight	2.5KG	2.5KG	2.5KG

### 380KG(800Lbs) Double door Magnetic Lock



Model	SCL-380B	SCL-380BS	SCL-380BDS
Lock Size	570L*55W*29H(mm)		
Armature Plate Dimension	190L*45W*11H(mm)		
Holding Force	380kg(800Lbs)*2		
Door signal	No	No	Yes
Lock signal	No	Yes	Yes
Input Voltage	DC12V or DC24V		
Working Current	12V/500mA*2 24V/250mA*2		
Door Type Applicable	Wooden / Glass / Metal / Fireproof door		
Security Type	Power off to open		
Weight	5KG	5KG	5KG

## Magnetic Lock Series

### 380KG(800Lbs) Single Door Magnetic Lock With Mortise Mount



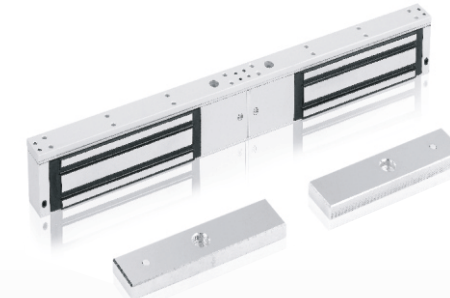
Model	SCL-380EA	SCL-380ES
Lock Size	273L*44W*27H(mm)	
Armature Plate Dimension	190L*45W*11H(mm)	
Holding Force	380kg(800Lbs)	
Door signal	No	No
Lock signal	No	Yes
Input Voltage	DC12V or DC24V	
Working Current	12V/500mA 24V/250mA	
Door Type Applicable	Wooden / Glass / Metal / Fireproof door	
Security Type	Power off to open	
Weight	2.5KG	2.5KG

### 500KG(1200Lbs) Single Door Magnetic Lock



Model	SCL-500A	SCL-500AS	SCL-500ADS
Lock Size	265L*71W*40H(mm)		
Armature Plate Dimension	185L*60W*13H(mm)		
Holding Force	500kg(1200Lbs)		
Door signal	No	No	Yes
Lock signal	No	Yes	Yes
Input Voltage	DC12V or DC24V		
Working Current	12V/600mA 24V/300mA		
Door Type Applicable	Wooden / Glass / Metal / Fireproof door		
Security Type	Power off to open		
Weight	4.5KG	4.5KG	4.5KG

### 500KG(1200Lbs) Double door Magnetic Lock



Model	SCL-500B	SCL-500BS	SCL-500BDS
Lock Size	530L*71W*40H(mm)		
Armature Plate Dimension	185L*60W*13H(mm)		
Holding Force	500kg(1200Lbs)*2		
Door signal	No	No	Yes
Lock signal	No	Yes	Yes
Input Voltage	DC12V or DC24V		
Working Current	12V/600mA*2 24V/300mA*2		
Door Type Applicable	Wooden / Glass / Metal / Fireproof door		
Security Type	Power off to open		
Weight	9KG	9KG	9KG

## Magnetic Lock Series

### 280KG(600Lbs)

Single Door Magnetic Lock (Waterproof)



Model	SCL-280ASW
Lock Size	210L*42W*28.5H(mm)
Armature Plate Dimension	185L*38W*12H(mm)
Holding Force	280kg(600Lbs)
Door signal	No
Lock signal	Yes
Input Voltage	DC12V or DC24V
Working Current	12V/460mA or 24V/220mA
Door Type Applicable	Wooden / Glass / Metal / Fireproof door
Security Type	Power off to open
Weight	2.3KG

### 500KG(1200Lbs)

Single Door Magnetic Lock (Waterproof)



Model	SCL-500ASW
Lock Size	240L*63.5W*43H(mm)
Armature Plate Dimension	185L*61W*16H(mm)
Holding Force	500kg(1200Lbs)
Door signal	No
Lock signal	Yes
Input Voltage	DC12V or DC24V
Working Current	12V/460mA or 24V/220mA
Door Type Applicable	Wooden / Glass / Metal / Fireproof door
Security Type	Power off to open
Weight	5KG

### 1200KG(2400Lbs)

Shear Lock



Model	SCL-1200A
Lock Size	182L*30W*25H(mm)
Armature Plate Dimension	182L*30W*23H(mm)
Holding Force	1200kg(2400Lbs)
Door signal	No
Lock signal	Yes
Input Voltage	DC12V
Working Current	12V/220mA
Door Type Applicable	Wooden / Glass / Metal / Fireproof door
Security Type	Power off to open
Weight	1.2KG

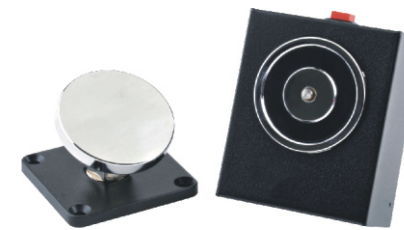
## Door holder Series

### Magnetic Lock for Auto-door



Model	SCL-51
Lock Size	80L*80W*40H(mm)
Armature Plate Dimension	100L*53W*53H(mm)
Holding Force	50kg(110Lbs)
Optional	No
Lock signal	No
Input Voltage	DC12V (DC24V need order)
Working Current	12V/140mA ( 24V/70mA)
Door Type Applicable	Auto-door
Security Type	Power off to open
Weight	0.8KG

### Floor mount door holder



Model	SCL-52
Lock Size	70L*40W*85H(mm)
Armature Plate Dimension	65L*65W*53H(mm)
Holding Force	50kg(110Lbs)
Optional	Manual door release button
Lock signal	No
Input Voltage	DC24V (DC12V need order)
Working Current	24V/90mA ( 12V/180mA)
Door Type Applicable	Wooden / Glass / Metal / Fireproof door
Security Type	Power off to open
Weight	0.9KG

### Floor & wall door holder



Model	SCL-53
Lock Size	116L*93W*118H(mm)
Armature Plate Dimension	65L*65W*53H(mm)
Holding Force	50kg(110Lbs)
Optional	Manual door release button
Lock signal	No
Input Voltage	DC24V (DC12V need order)
Working Current	24V/90mA ( 12V/180mA)
Door Type Applicable	Wooden / Glass / Metal / Fireproof door
Security Type	Power off to open
Weight	1.4KG

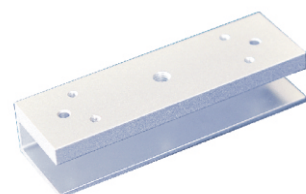
## Magnetic Lock Bracket

### Electro-magnetic Lock Bracket (L Type)



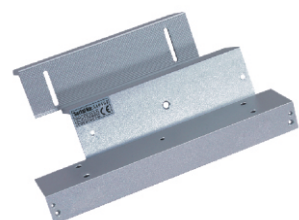
Model	SCL-180L	SCL-280L	SCL-380L	SCL-500L
Material	High Strength Aluminum, Sandblast Finished			
Door Type Applicable	Wooden / Glass / Metal / Fireproof door			
Opening Mode	90 Degree Door			
Application of lock	VI-180	VI-280	VI-380	VI-500
Weight	0.14KG	0.27KG	0.33KG	0.58KG

### Electro-magnetic Lock Bracket (U Type)



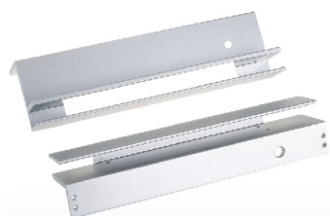
Model	SCL-180U	SCL-280U	SCL-380U
Material	High Strength Aluminum, Sandblast Finished		
Door Type Applicable	Frameless Glass door		
Opening Mode	90 Degree Door		
Application of lock	VI-180	VI-280	VI-380
Weight	0.25KG	0.32KG	0.47KG

### Electro-magnetic Lock Bracket (ZL Type)



Model	SCL-180ZL	SCL-280ZL	SCL-380ZL	SCL-500ZL
Material	High Strength Aluminum, Sandblast Finished			
Door Type Applicable	Wooden / Glass / Metal / Fireproof door			
Opening Mode	90 Degree Door			
Application of lock	VI-180	VI-280	VI-380	VI-500
Weight	0.5KG	0.75KG	0.82KG	1.3KG

### Electro-magnetic Lock Bracket (F Type)



Model	SCL-280F
Material	High Strength Aluminum, Sandblast Finished
Door Type Applicable	Fully Frameless Glass Door
Opening Mode	90 Degree Door
Application of lock	VI-280
Weight	0.85KG

## Electric Bolt Series

**Ultralow Temperature and Low Power Consumption**  
**Beautiful Appearance and Good Safety**

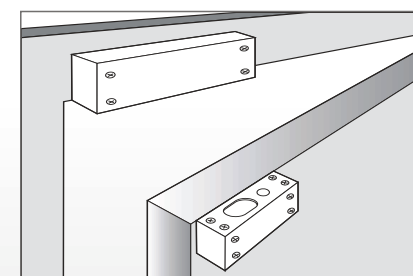
### ※ Product Overview

Electric Bolt lock is kind of electric control locks, it works by means of extending or retracting the lock bolt with electric current. The Secuart Electric Bolt lock use the microprocessor chip to control electric circuit, so it decreases the power consumption and really has the ultralow temperature function. After 500000 times of test, we can assure our locks are more stable, more environmentally friendly and durable. Electric Bolt lock is designed mainly for glass door, wooden door and metal door, it is suitable for bidirectional door and sliding door, becomes the best choice of access control automation management.

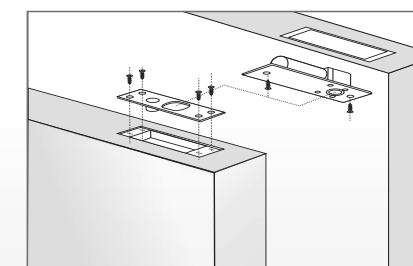
### ※ Advantage of the products

- ◆ Photoelectric control technology, prevent mechanical failure.
- ◆ Ultra-low temperature design, Safer and more durable.
- ◆ More than 500 000 working times.
- ◆ Ultra-low-power design, More durable and more environmentally friendly.
- ◆ Built-in reverse current and prevention device (MOV).
- ◆ High strength aluminum alloy lock body, stainless steel lock bolt.
- ◆ Products pass the EU CE and china MA qualified certification.
- ◆ Intelligent single chip configuration, three types current application.

### ※ Installation drawing



Exposed Installation



Embedded Installation

## Electric Bolt Series

### Electric Bolt Lock (Low Temperature)



Model	SCL-801	SCL-801T	SCL-802S	SCL-802ST
Product Type	Standard Electric Bolt lock		Electric Bolt lock with the signal output	
Lock Size	205Lx35Wx40H(mm)			
Strike	90Lx25Wx2H(mm)			
Input Voltage	DC12V±10%			
Working Current	110mA			
Door Type Applicable	Wooden / Glass / Metal / Fireproof door			
Time Delay	No	Yes	No	Yes
Signal output	No	No	Yes	Yes
Security Type	Locked when energized			
Weight	0.72KG	0.72KG	0.72KG	0.72KG

### Electric Bolt Lock (Intelligent / Automatic door)



Model	SCL-803ST	SCL-805ST
Product Type	Intelligent Electric Bolt lock	Automatic door Electric Bolt lock
Lock Size	205Lx35Wx40H(mm)	
Strike	90Lx25Wx2H(mm)	
Input Voltage	DC12V±10%	
Working Current	110mA	110mA
Door Type Applicable	Wooden / Glass / Metal / Fireproof door	
Time Delay	Yes	Yes
Signal output	Yes	Yes
Security Type	Locked when energized	
Weight	0.72KG	0.72KG

### Narrow panel Electric Bolt Lock (Short panel)



Model	SCL-806ST
Product Type	Narrow panel Electric Bolt lock (Short panel)
Lock Size	148.5x24.5x39(mm)
Strike	148.5x24.5x20(mm)
Input Voltage	DC12V±10%
Working Current	80mA
Door Type Applicable	Wooden / Glass / Metal / Fireproof door
Time Delay	Yes
Signal output	Yes
Security Type	Locked when energized
Weight	0.86KG

## Electric Bolt Series

### Narrow panel Electric Bolt Lock (Long Panel)



Model	SCL-807ST
Product Type	Narrow panel Electric Bolt lock (Long Panel)
Lock Size	200x24.5x39(mm)
Strike	90x25x2(mm)
Input Voltage	DC12V±10%
Working Current	80mA
Door Type Applicable	Wooden / Glass / Metal / Fireproof door
Time Delay	Yes
Signal output	Yes
Security Type	Locked when energized Unlocked when energized (Need Order)
Weight	0.75KG

### Electric Bolt Lock (Fully Frameless Glass Door)



Model	SCL-808ST
Product Type	Fail safe electric bolt is for fully frameless glass door
Lock Size	148x43x39(mm)
Strike	148x43x25(mm)
Input Voltage	DC12V±10%
Working Current	80mA
Door Type Applicable	Fully Frameless Glass Door
Time Delay	Yes
Signal output	Yes
Security Type	Locked when energized
Weight	1.6KG

### Electric Bolt Lock (with keys)

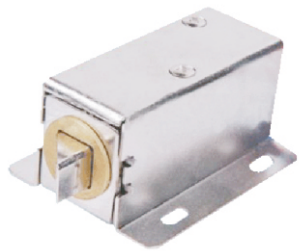


Model	SCL-810ST
Product Type	Electric Bolt lock with keys
Lock Size	200x25x38(mm)
Strike	90x23x2.5(mm)
Input Voltage	DC12V±10%
Working Current	80mA
Door Type Applicable	Wooden / Glass / Metal / Fireproof door
Time Delay	Yes
Signal output	Yes
Security Type	Unlocked when energized
Weight	0.9KG



## Electric Bolt Lock Bracket

### Electric Cabinet Lock



Model	SCL-820
Lock Size	55Lx40Wx30H(mm)
Pin length	10Lx10Wx10H(mm)
Input Voltage	DC12V±10%
Working Current	60mA
Temperature	-40°C~+50°C
Door Type Applicable	File Cabinet
Signal output	No
Security Type	Locked when energized
Weight	0.18KG

### Electric Bolt Lock Bracket (Glass Door)



Model	SCL-800L
Product Type	The Stainless Steel Bracket for Frameless Glass Door
Size	55Lx40Wx30H(mm)
Material Science	Stainless steel
Glass Thickness	10~15mm
Opening Mode	90 or 180 Degree Swing Door
Application of lock	VI-801/802/803/805/807/810
Weight	0.3KG

### Electric Bolt Lock Bracket (Fully Frameless Glass Door)



Model	SCL-800U
Product Type	The Stainless Steel Bracket for Frameless Glass Door
Size	205Lx58Wx46H(mm)
Material Science	Stainless steel
Glass Thickness	8~15mm
Opening Mode	90 or 180 Degree Swing Door
Application of lock	VI-801/802/803/805/807/810
Weight	1.6KG

**Secuart®**

## Electric Strike Series



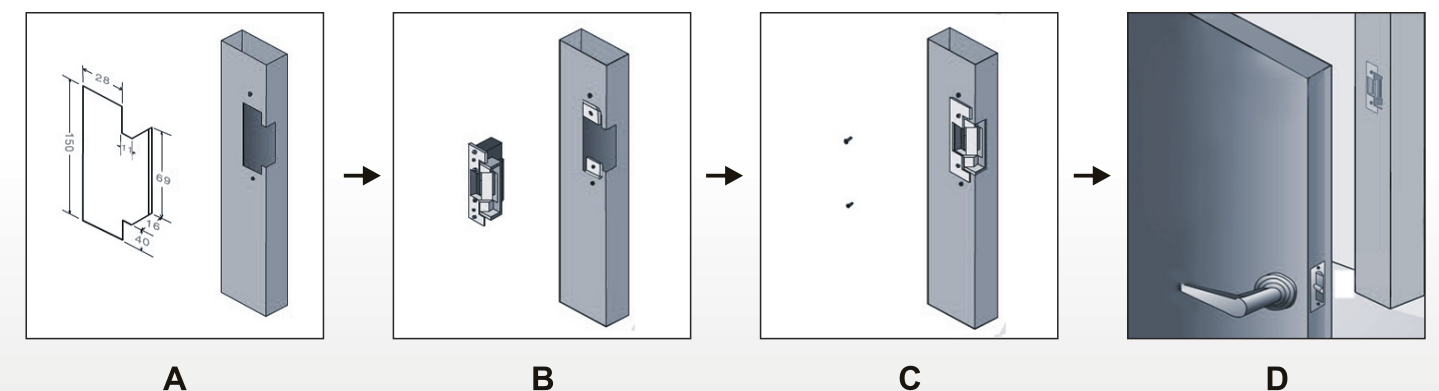
### ※ Product Overview

The electric strike has the similar working principle as the electric bolt lock, it must work with the mechanical lock, so the range of application is small. And it is often used for ordinary wooden door, with the notch of strike sucking the bolt of door, it can lock or open the door. By embedded installing, our products looks excellent. The electromagnetic part is made of high quality magnetic material and adopted specially technology processing, thereby there is no residual magnetism after long time working, then can prove the normal use of the strikes. Moreover, our strikes can support the door with 90 degree opened. At last, with hardness stainless steel material, our strike can bear 500kg impact pressure.

### ※ Advantage of the products

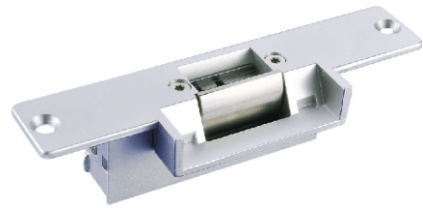
- ◆ Bear 500kg impact pressure.
- ◆ Special design, the distance of bolt can be adjusted.
- ◆ It is especially suitable for the metal frame, by trepanning, the strike can directly install.
- ◆ Testing to 1000000 cycles.
- ◆ Products pass the EU CE and china MA certification.
- ◆ The surface is treated with high temperature baking varnish, and it is durable and beautiful.

### ※ Installation drawing



## Electric Strike Series

### Standard Electric Strike



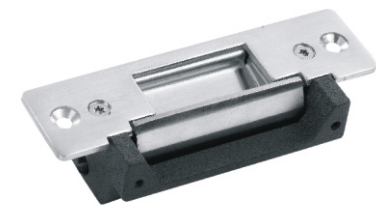
Model	SCL-700	SCL-700S
Lock Size	150x40x34(mm)	
Holding Stength	500KG	
Lock structure	Stainless Steel	
Input Voltage	DC12V±10%	
Working Current	200mA	
Door Type Applicable	Wooden Door, Metal Door, PVC Door	
Signal Output	No	Yes
Security Type	Lock When Power off ( Standard) Unlock When Power off (Customizable)	
Weight	0.3KG	0.3KG

### Short Panel Electric Strike



Model	SCL-701
Lock Size	160x25x31(mm)
Holding Stength	500KG
Lock structure	Stainless Steel
Input Voltage	DC12V±10%
Working Current	200mA
Door Type Applicable	Wooden Door, Metal Door, PVC Door
Signal Output	No
Security Type	Lock When Power off ( Standard) Unlock When Power off (Customizable)
Weight	0.4KG

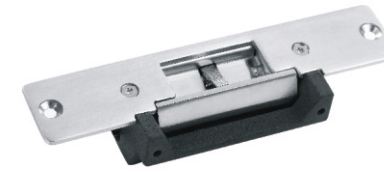
### American Standard Electric Strike (short panel)



Model	SCL-702	SCL-702S
Lock Size	124x32x35(mm)	
Holding Stength	500KG	
Lock structure	Surface by coating nickel	
Input Voltage	DC12V ± 10%	
Working Current	320mA	
Door Type Applicable	Wooden Door, Metal Door, PVC Door	
Signal Output	No	Yes
Security Type	Lock When Power off ( Standard) Unlock When Power off (Customizable)	
Weight	0.35KG	0.35KG

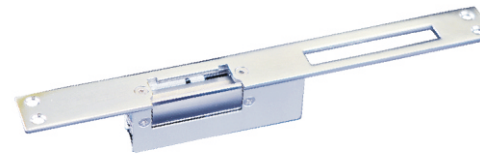
## Electric Strike Series

### American Standard Electric Strike ( Long Panel)



Model	SCL-703	SCL-703S
Lock Size	165x32x35(mm)	
Holding Stength	500KG	
Lock structure	Surface by coating nickel	
Input Voltage	DC12V±10%	
Working Current	200mA	
Door Type Applicable	Wooden Door, Metal Door, PVC Door	
Signal Output	No	Yes
Security Type	Lock When Power off ( Standard) Unlock When Power off (Customizable)	
Weight	0.4KG	0.4KG

### Long Panel Electric Strike



Model	SCL-704
Lock Size	250x25x31(mm)
Holding Stength	500KG
Lock structure	Surface by coating nickel
Input Voltage	DC12V±10%
Working Current	200mA
Door Type Applicable	Wooden Door, Metal Door, PVC Door
Signal Output	Yes
Security Type	Lock When Power off ( Standard) Unlock When Power off (Customizable)
Weight	0.4KG

### Long Type European Electric Strike



Model	SCL-705
Lock Size	250x25x35(mm)
Holding Stength	500KG
Lock structure	Surface by coating nickel
Input Voltage	DC12V±10%
Working Current	200mA
Door Type Applicable	Wooden Door, Metal Door, PVC Door
Signal Output	No
Security Type	Lock When Power off ( Standard) Unlock When Power off (Customizable)
Weight	0.42KG

## Electric Strike Series

### European Narrow-type and Adjustable Electric Strike



Model	SCL-706
Lock Size	250x25x32(mm)
Holding Stength	500KG
Lock structure	Surface by coating nickel
Input Voltage	DC12V±10%
Working Current	200mA
Door Type Applicable	Wooden Door, Metal Door, PVC Door
Signal Output	No
Security Type	Lock When Power off ( Standard) Unlock When Power off (Customizable)
Weight	0.42KG

### Adjustable Electric Strike With Narrow Frame



Model	SCL-707
Lock Size	110x25x32(mm)
Holding Stength	500KG
Lock structure	Surface by coating nickel
Input Voltage	DC12V±10%
Working Current	200mA
Door Type Applicable	Wooden Door, Metal Door, PVC Door
Signal Output	No
Security Type	Lock When Power off ( Standard) Unlock When Power off (Customizable)
Weight	0.3KG

### Glass Electric Strike



Model	SCL-708
Lock Size	160x25x31(mm)
Holding Stength	500KG
Lock structure	Surface by coating nickel
Input Voltage	DC12V±10%
Working Current	200mA
Door Type Applicable	Wooden Door, Metal Door, PVC Door
Signal Output	No
Security Type	Unlock When Power off (Standard)
Weight	0.4KG

**Secuart®**

## Electric Rim Lock Series

CE FC

SGS UKAS

**No mechanical collision Little working sound**  
**Lower power consumption Long service life**

### ※ Product Overview

Our new product, electric rim lock, whose design effectively combine the electric locks and magnetic locks, successfully overcome the weakness of the electric locks and magnetic locks: huge working sound and high power consumption. Compared with the lock mentioned, our product, with excellent performance and more advantage, it can work in building intercom system, access control system, ect.

Secuart electric rim lock, adopt advanced circuit design and stamping shell, our thicken lock body can bear more 20% impulse force than other manufactures, and service life can reach to 3500000 operations. Now our product has exported to more than 60 countries, they are widely used in intelligent building, intelligent community, school, apartment, become the convenient, fast tool for the global users, gain good reputation for the customers.

### ※ Advantage of the products

- ◆ Multiple unlocking mode: access controller, building intercom system. card, key, ect.
- ◆ Self locking ensure the lock will lock again in 15s, if the door don't open.
- ◆ Universal for any opening way of doors.
- ◆ Reliable locking mechanism (Up to 3500000 operations).
- ◆ Unique design for preventing noise of mechanical collision.
- ◆ Exclusive warning tone for every move of lock.
- ◆ Extremely lower power consumption.
- ◆ Easy to install for every users.

### ※ Product Parameters



Electric motor lock (single cylinder)

Electric motor lock (double cylinder)

## Electric Rim Lock Series

### Electric rim lock



Model	SCL-600A	SCL-600B
Cylinder	Single	Double
Input Voltage	DC12V±10%	
Start Current	950mA	
Working Current	150mA	
Length of the lock tongue	12mm	
Door Type Applicable	Wooden / Glass / Metal / Fireproof door	
Weight	1.25KG	1.25KG

### Electric motor lock



Model	SCL-601A	SCL-601B
Cylinder	Single	Double
Input Voltage	DC12V±10%	
Start Current	950mA	
Working Current	100mA	
Length of the lock tongue	22mm	
Door Type Applicable	Wooden / Glass / Metal / Fireproof door	
Weight	1.25KG	1.25KG

### All-In-One electric motor lock



Model	SCL-602A	SCL-602B
Cylinder	Single	Double
Input Voltage	DC12V±10%	
Start Current	950mA	
Working Current	100mA	
Length of the lock tongue	22mm	
Door Type Applicable	Wooden / Glass / Metal / Fireproof door	
Weight	1.35KG	1.35KG

### Electric rim lock



Model	SCL-603A	SCL-603B
Cylinder	Single	Double
Input Voltage	DC12V±10%	
Start Current	950mA	
Working Current	150mA	
Length of the lock tongue	14mm	
Door Type Applicable	Wooden / Glass / Metal / Fireproof door	
Weight	1.7KG	1.7KG

**Secuart®**

## Door Release Button Series



**Elegant design Long service life Easy to install**

### ※ Product Overview

Door release button is one of the most important accessory in the access control system, millions of people commonly use it in the daily life. Secuart electric lock company, produces more than 20 different types of door release buttons, with material such as the plastic, aluminum alloy, zinc alloy, stainless steel and so on, to meet the customers' need.

Our release button is featured at elegant design, Long service life, easy installation, gain great feedback from all over the world. Now our products are widely used in the access control system of airport, subway, Banks, prisons, intelligent building, intelligent community, and other important places, and become convenient, fast and intelligent tools for the global users.

### ※ Advantage of the products

- ◆ Professional circuit design, no mechanical failure.
- ◆ Elegant appearance design, beautiful and easy.
- ◆ Fire retardant material, convenient installation.
- ◆ Various types, different using way.
- ◆ Normally open/closed functions, flexible application.
- ◆ 500000 Cycles tests, long service life.
- ◆ Appointed products for the high-class access control project.
- ◆ CE/FCC/ROHS approval.

### ※ Installation drawing



Air port



Metro Station



Office

**Door Release Button Series**



**Door Release Button Series**



## Single Door Access Control



**Metallic and water proofing design  
Prevents water , damp , damage**

### ※ Product Overview

MA door access control keypad is of single door metal keypad, which is produced according to customer's requirements. Comparing with the common access control keypads, it is one of the most leading single door access control keypads, it not only has the function of the controller but also built in card reader, which is more convenient for using and installation. Unique metal shell design, skillful operation of the keyboard, built-in high-end microprocessors, strong anti-interference ability, mak our product high safety and reliability. Waterproof level of IP68,helps to prove the installation in outdoor harsh environments, and provides powerful security for 2000 users. With function of low power consumption, luminous keyboard, independent password, wiegand input, output short circuit protection, door button , the interface for doorbell and so on, it is convenient to use, and can be widely apply to the places : home, office, residence and other public places.

### ※ Advantage of the products

- ◆ Don't need to connect the computer. System Setting can be offline including add or delete cards, password modification and lock time.
- ◆ It supports 2000 users and can install one external card reader head.
- ◆ It has exit button, door-magnet and door bell interface etc.
- ◆ Read Distance: 3-10cm, After read card, door can open within 0.1s.
- ◆ It has exit button, door-magnet and door bell interface etc.
- ◆ Beautiful design, Lighted keyboard with silver plating which is time and fashion.
- ◆ Support EM ,MIFARE, Opening Door By Password and Opening Door By Card + Password.
- ◆ Perfect safety performance, Adopt metal shell and Have dismiss alarm and door-magnet alarm.
- ◆ Electric lock interface uses the relay output. Normally open or normally closed output mode is optional.
- ◆ Output has waterproof function, It is suitable for outdoor use.



Damage proofing

Water proofing

Luminous keyboard

Touch Keypad

## Single Door Access Control

### Single Door Metal Access Control



Model	SCA-AC02	SCA-AC01
Card Type	EM Card	MF Card
Working Frequency	125KHz	13.56MHz
Reading Range	5-15cm	3-5cm
Card Capacity	800 Cards	
Operation Mode	Card, Password, Card + Password	
Input Voltage	DC12V ±10%	
Working Current	30mA	
Protocol	Wiegand 26	
Waterproof Grade	No	
Dimensions	117*117*21mm	

### Single Door Touch Screen Access Control



Model	SCA-AC04	SCA-AC03
Card Type	EM Card	MF Card
Working Frequency	125KHz	13.56MHz
Reading Range	5-15cm	3-5cm
Card Capacity	1000 Cards	
Operation Mode	Card, Password, Card + Password	
Input Voltage	DC12V ±10%	
Working Current	30mA	
Protocol	Wiegand 26	
Waterproof Grade	No	
Dimensions	120*78*22mm	

### Single Door Metal Access Control



Model	SCA-MA10/20	SCA-MA11/21
Card Type	EM Card	MF Card
Working Frequency	125KHz	13.56MHz
Reading Range	5-15cm	3-5cm
Card Capacity	2000 Cards	
Operation Mode	Card, Password, Card + Password	
Input Voltage	DC12V ±10%	
Working Current	30mA	
Protocol	Wiegand 26/34	
Waterproof Grade	IP68	
Dimensions	120*56*20mm/120*80*25mm	

## Single Door Access Control

### Single Door Metal Access Control



Model	SCA-MA50	SCA-MA51
Card Type	EM Card	MF Card
Working Frequency	125KHz	13.56MHz
Reading Range	5-15cm	3-5cm
Card Capacity	1000 Cards	
Operation Mode	Card	
Input Voltage	DC12V ±10%	
Working Current	50mA	
Protocol	Wiegand 26	
Waterproof Grade	IP66	
Dimensions	128*85*22mm	

### Single Door Metal Access Control



Model	SCA-EH60	SCA-EH70
Card Type	EM / HID Card	
Working Frequency	125KHz	
Reading Range	5-15cm	
Card Capacity	2000 Cards	
Operation Mode	Card, Password, Card + Password	
Input Voltage	DC12V ±10%	
Working Current	35mA	
Protocol	Wiegand 26/34	
Waterproof Grade	IP68	
Dimensions	158*43*21.7mm	

### Single Door Metal Access Control



Model	SCA-EH62/72	SCA-EH/63/73
Card Type	EM / HID Card	Mifare/CPU Card
Working Frequency	125KHz	13.56MHz
Reading Range	5-15cm	3-5cm
Card Capacity	2000 Cards	
Operation Mode	Card, Password, Card + Password	
Input Voltage	DC12V ±10%	
Working Current	35mA	
Protocol	Wiegand 26/34	
Waterproof Grade	IP68	
Dimensions	125*83*21.7mm	

## Power Supply Series

### Switching power supply



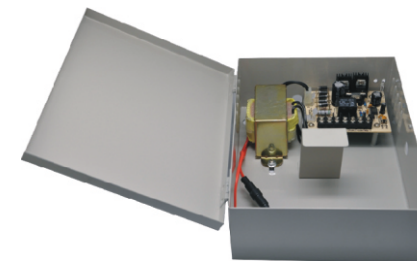
Model	SCA-PS01	SCA-PS02
Input	AC220V±20% / AC110V±20%	
Output	DC12V±15%	
Output current	3A	5A
Charging Current	1A	
Output Over current Protection	6A±5%	
Ripple	≤100mV	
Suitable Battery	12V / 7Ah	
Size	125*80*43mm	140*80*43mm

### Linear power supply



Model	SCA-PS04	SCA-PS05
Input	AC220V±20%	
Output	DC12V±15%	
Output current	3A	5A
Charging Current	NO	
Output Over current Protection	NO	
Ripple	≤100mV	
Suitable Battery	NO	
Size	182*79*62mm	182*79*62mm

### Linear power supply



Model	SCA-PS06	SCA-PS07
Input	AC220V±20%	
Output	DC12V±15%	
Output current	3A	5A
Charging Current	1A	
Output Over current Protection	6A±5%	
Ripple	≤120mV	
Suitable Battery	12V / 7Ah	
Size	214*168*73mm	214*168*73mm

Door closer



Model	SCA-S101	SCA-S112
Max Door Weight	20-40KG	40-60KG
Max door width	750mm	950mm
Spring Power	EN1-2	EN2-3
Max Opening Angle	130°	180°
Closing speed adjustment	No	Yes
Hold Open	No	Yes
Passed durability test	1,000,000 cycles	
Applicability	-20 °C -55 °C	
Selective Color	Silver/Black/Milky/Golden	

Door closer



Model	SCA-S203	SCA-S214
Max Door Weight	60-80KG	80-100KG
Max door width	1100mm	1250mm
Spring Power	EN3-4	EN4-5
Max Opening Angle	180°	180°
Closing speed adjustment	Yes	Yes
Hold Open	Yes	Yes
Passed durability test	1,000,000 cycles	
Applicability	-20 °C -55 °C	
Selective Color	Silver/Black/Milky/Golden	

Door closer



Model	SCA-S505
Max Door Weight	40-100KG
Max door width	850-1250mm
Spring Power	EN2-5
Max Opening Angle	180°
Closing speed adjustment	Yes
Hold Open	Yes
Passed durability test	1,000,000 cycles
Applicability	-20 °C -55 °C
Selective Color	Silver/Black/Milky/Golden

Distributors

Turkey

Kazakhstan

Suudi Arabia

Azerbaijan

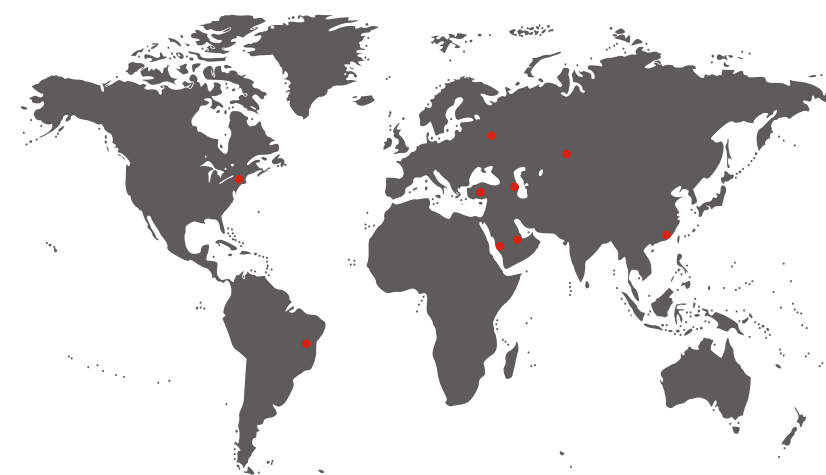
China

USA

Iran

Russia

UAE



Quality Certificates

Quality of VIDEOCOM products are guaranteed by national and international corporations.

All of the products are according to national and internal standards, CE standardised.



KNX is one of the biggest Worldwide used Smart Home & Smart Building Automation System and protocol. Videocom is also one of the manufacturer member of KNX Association.

